

MPS Catalog Number:

S1 40 90 048 MA AL 031

Date:

01/23/2014

END FITTINGS

Tower End Fitting:

Y-Clevis (Forged Steel)

Line End Fitting:

Eye (Forged Steel)

MATERIAL

Corona Ring (Tower):

None

Corona Ring (Line):

8" Corona Ring

Corona Rings are recommended for applications of 230 kV and above

Number of Sheds:

15 large 16 standard

Rod Diameter:

16 mm

Weight Estimate:

13.2 lbs

6 kg

DIMENSIONAL VALUES

Section Length (L):

61.6 in

1,567 mm

Rubber Length (X):

48.4 in

1,229 mm

Standard Shed Height (P1):

1.5 in

38 mm

Large Shed Height (P2):

2 in

51 mm

Projection Ratio (S/P):

-

1.5

Shed Spacing (S):

3 in

76 mm

Dry Arc Distance:

48.1 in

1,222 mm

Leakage Distance:

140.1 in

3,559 mm

ELECTRICAL VALUES

60 Hz Dry Flashover:

472 kV

Min. Withstand:

437 kV

60 Hz Wet Flashover:

422 kV

Min. Withstand:

367 kV

Pos. Critical Impulse Flashover:

809 kV

Min. Withstand:

703 kV

Neg. Critical Impulse Flashover:

857 kV

Min. Withstand:

751 kV

MECHANICAL VALUES

Specified Mech. Load (SML):

25,000 lbs

111.2 kN

Routine Test Load (RTL):

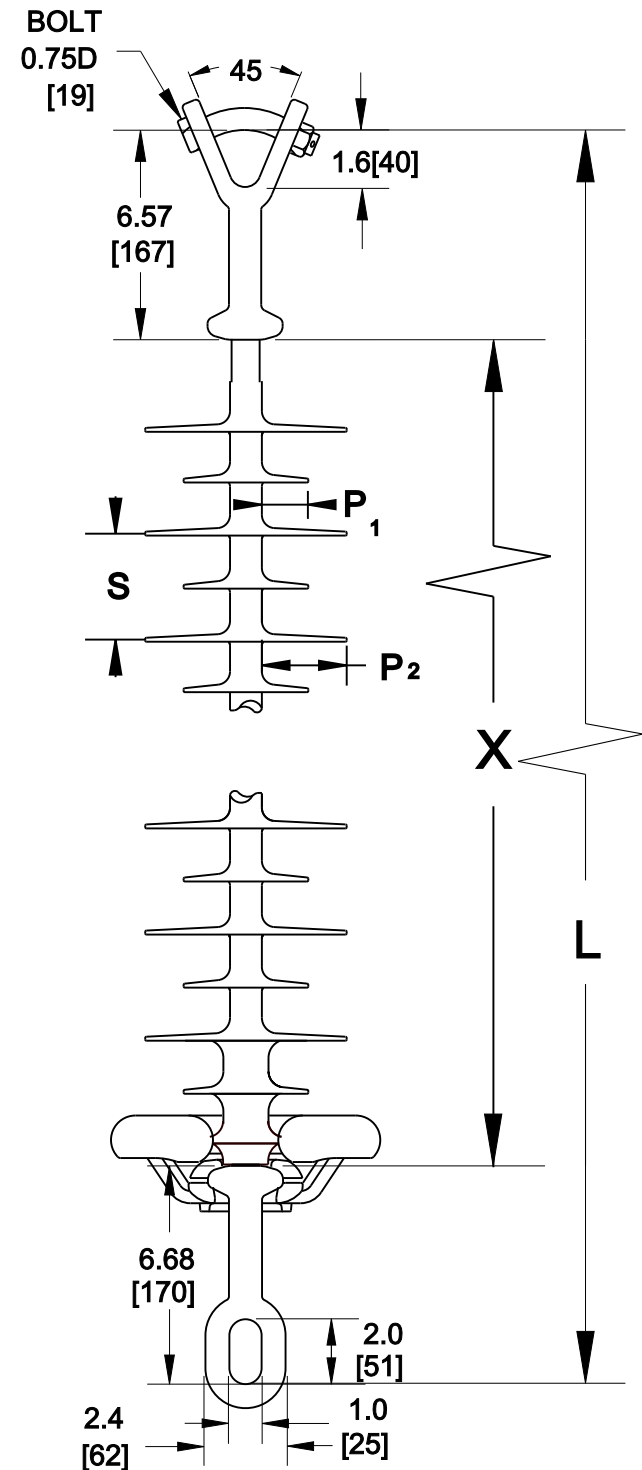
12,500 lbs

55.6 kN

This drawing contains confidential information that is property of MacLean Power L.L.C ('MacLean'). Use of MacLean's confidential information without MacLean's express written consent is strictly prohibited and may expose you to legal liability. If you believe that you received this material in error, please destroy it or return it to 'MacLean Power, L.L.C., 7801 Park Place Rd, York, SC, 29745, USA.'

Dimensions: inches [millimeters]

Note: Drawing not actual depiction of insulator appearance



Silicone Rubber Sheath & Sheds
Complies with applicable ANSI and IEC standards.